



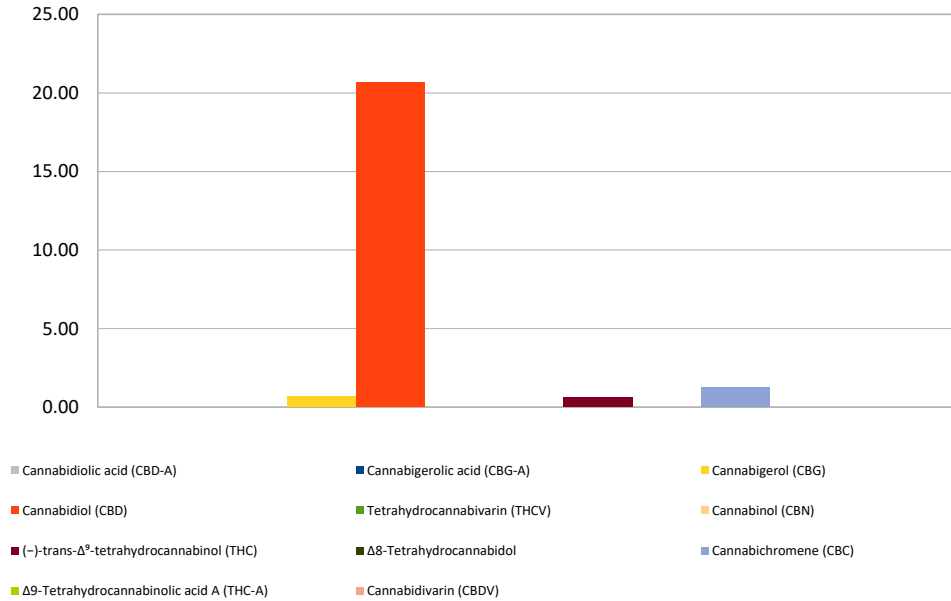
# Cannabinoid Profile

**Customer:** America's Finest CBD  
**Customer Sample ID:** AFC 500mg Full Spectrum Tincture Batch 182  
**Laboratory Number:** 201903-0255  
**Extraction Technician:** CB  
**Analytical Chemist:** GB  
**Density (g/mL):** 0.968

Extraction Date(s):	Analysis Date(s)
3/6/2019	3/6/2019

Cannabinoid (HPLC)	Results		
	LOD (mg/g)	Percent	mg/mL
Cannabidivarin (CBDV)	<0.2		
Cannabidiolic acid (CBD-A)	<0.2		
Cannabigerolic acid (CBG-A)	<0.2		
Cannabigerol (CBG)		0.068%	0.66
Cannabidiol (CBD)		2.137%	20.68
Tetrahydrocannabivarin (THCV)	<0.2		
Cannabinol (CBN)	<0.2		
(-)-trans- $\Delta^9$ -tetrahydrocannabinol (THC)		0.065%	0.63
$\Delta^8$ -Tetrahydrocannabinol	<0.2		
Cannabichromene (CBC)		0.132%	1.27
$\Delta^9$ -Tetrahydrocannabinolic acid A (THC-A)	<0.2		
<b>Cannabinoids Total</b>		<b>Percent</b>	<b>mg/g</b>
<b>Max Active THC</b>		<b>0.07%</b>	<b>0.65</b>
<b>Max Active CBD</b>		<b>2.14%</b>	<b>21.37</b>
<b>T. Active Cannabinoids</b>		<b>2.40%</b>	<b>24.02</b>
<b>Total Cannabinoids</b>		<b>2.40%</b>	<b>24.02</b>
<b>Ratios</b>			
<b>32.83 :1 CBD to THC</b>		<b>0.03 :1 THC to CBD</b>	

Cannabinoid (mg/mL)



Altitude Consulting, LLC utilizes NIST traceable Reference Standards and Certified Reference Material to calibrate analytical instruments along with proven analytical methods. The methods are applied in the most ethical manner following good laboratory practice guidelines. The results of this report are based solely on the sample submitted and cannot be reproduced.

This report expires 30 days after analysis date.



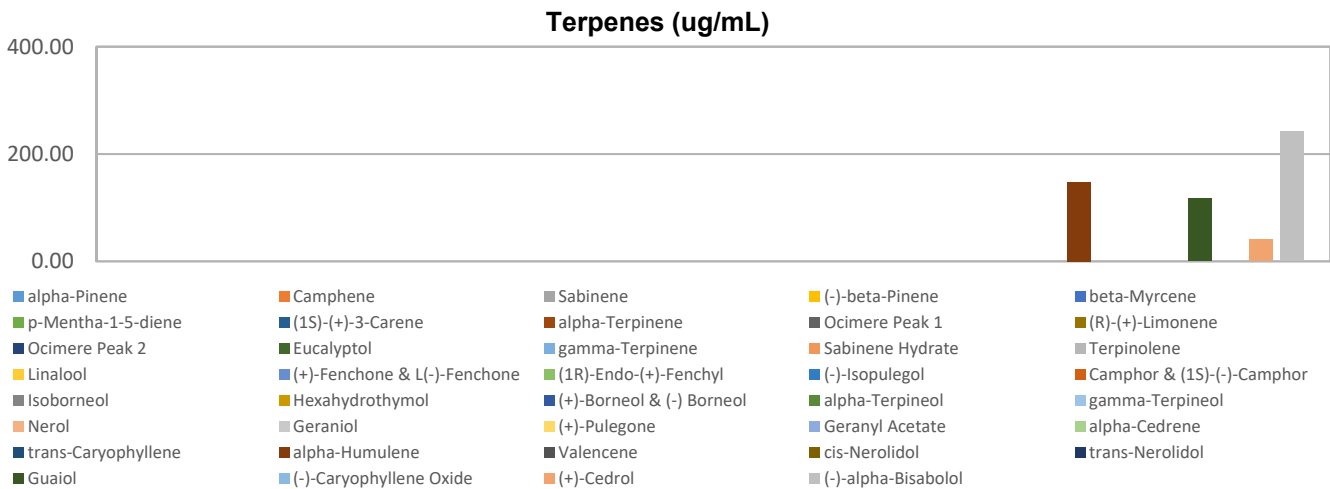
# Terpenes Profile

**Customer:** America's Finest CBD  
**Customer Sample ID:** AFC 500mg Full Spectrum Tincture Batch 182  
**Laboratory Number:** 201903-0255  
**Extraction Technician:** CB  
**Analytical Chemist:** GB  
**Density (g/mL):** 0.968

Extraction Date(s)	Analysis Date(s)
3/6/2019	3/6/2019

Terpene	Results	Terpene	Results
	ug/mL		ug/mL
alpha-Pinene		Isoborneol	
Camphene		Hexahydrothymol	
Sabinene		(+)-Borneol & (-) Borneol	
(-)-beta-Pinene		alpha-Terpineol	
beta-Myrcene		gamma-Terpineol	
p-Mentha-1-5-diene		Nerol	
(1S)-(+)-3-Carene		Geraniol	
alpha-Terpinene		(+)-Pulegone	
Ocimere Peak 1		Geranyl Acetate	
(R)-(+)-Limonene		alpha-Cedrene	
Ocimere Peak 2		trans-Caryophyllene	
Eucalyptol		alpha-Humulene	147.13
gamma-Terpinene		Valencene	
Sabinene Hydrate		cis-Nerolidol	
Terpinolene		trans-Nerolidol	
Linalool		Guaial	116.73
(+)-Fenchone & L(-)-Fenchone		(-)-Caryophyllene Oxide	
(1R)-Endo-(+)-Fenchyl		(+)-Cedrol	40.54
(-)-Isopulegol		(-)-alpha-Bisabolol	242.09
Camphor & (1S)-(-)-Camphor			

Empty result indicates data is less than detection limit. Reporting Limit is roughly 100 ug/g depending on amount extracted.



Altitude Consulting, LLC utilizes NIST traceable Reference Standards and Certified Reference Material to calibrate analytical instruments along with proven analytical methods. The methods are applied in the most ethical manner following good laboratory practice guidelines. The results of this report are based solely on the sample submitted and cannot be reproduced.

This report expires 30 days after analysis date.